

# ELITE

## YIELD MONITOR

CLIMATE  
**FIELDVIEW**

**CAB APP  
COMPATIBLE**



### DISPLAY FEATURES

- ◆ Easy to use Touch Screen Operation.
- ◆ Climate Fieldview Compatibility. (Fall 2020)
- ◆ Works on Any Combine.
- ◆ Yield (Bushels per Acre).
- ◆ Grain Moisture Content (% Moisture).
- ◆ Field and Total Bushels.
- ◆ Wet or Dry Bushels.
- ◆ Instant or Average Yield Readings.
- ◆ Swath Width Adjustment.
- ◆ Track Individual Load Totals.
- ◆ Non-Contact Field Proven Yield Sensor.
- ◆ Log to SD Card and Import Field Maps.
- ◆ Switch from Yield Monitoring on Combines to Population & Seeding for any Drill or Planter.



The New **Loup Elite** Yield Monitor provides accurate Bushels/Acre and % Moisture for any combine.

Track every load harvested and log mapping data to SD Memory through easy-to-use Touchscreen display.



3030 N. 40TH ST. • Lincoln, NE 68504  
Toll Free: **877-489-5687**  
**[loupelectronics.com](http://loupelectronics.com)**

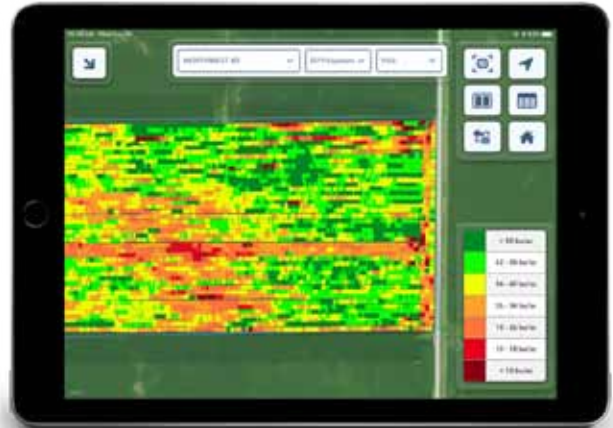
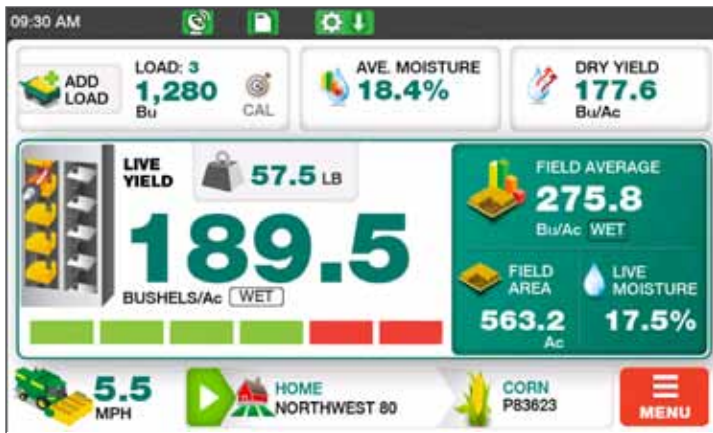
Track Each Load

Two Custom Displays

7" Color Touchscreen

Bushels/Ac Legend

Climate Cab App Compatible



Live & Ave Yield Readout

Log Tasks by Farm & Field

Select Your Crop & Hybrid

Swath Width Adjustment

Live or Average % Moisture

## FIELD-PROVEN YIELD AND MOISTURE SENSORS



3030 N. 40TH ST. • Lincoln, NE 68504  
 Toll Free: **877-489-5687**  
[loupeelectronics.com](http://loupeelectronics.com)